



PangeAI



The perfect storm is forming

Plummeting launch costs | More powerful satellites | Sensor proliferation | Drone technology

Massive increase in data being generated

Climate risks | Supply chain disruptions | Political uncertainty

More demands from the org

Expensive | Slow | Capacity-constrained

Few GIS experts

Only a fraction
of data is analyzed

1%

No good options for

Geospatial Intelligence

External GIS Firms

\$100K Project Min
2-3 months



Internal GIS Teams

\$10K / FTE / month
4-5 months



Source the correct data sets

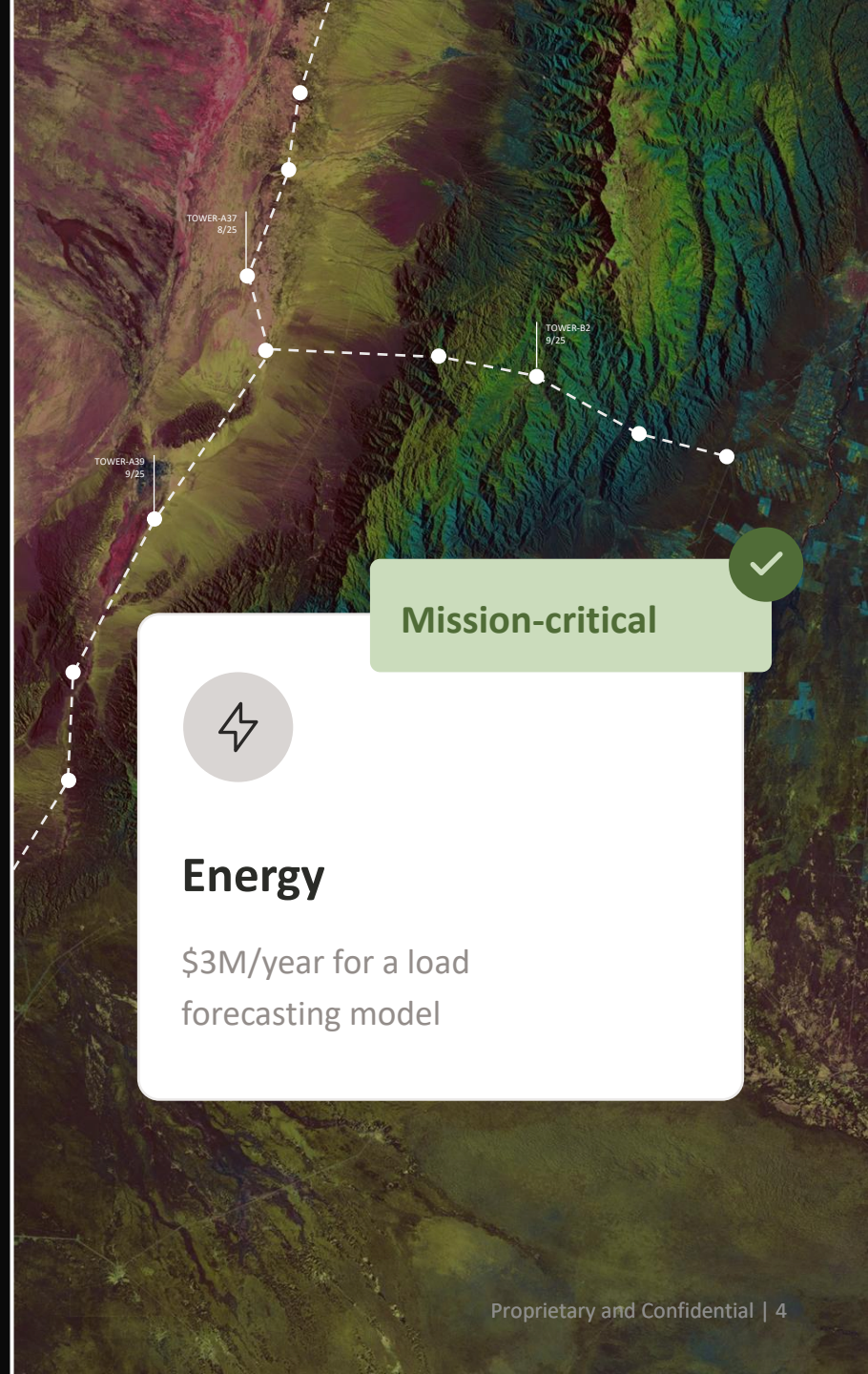
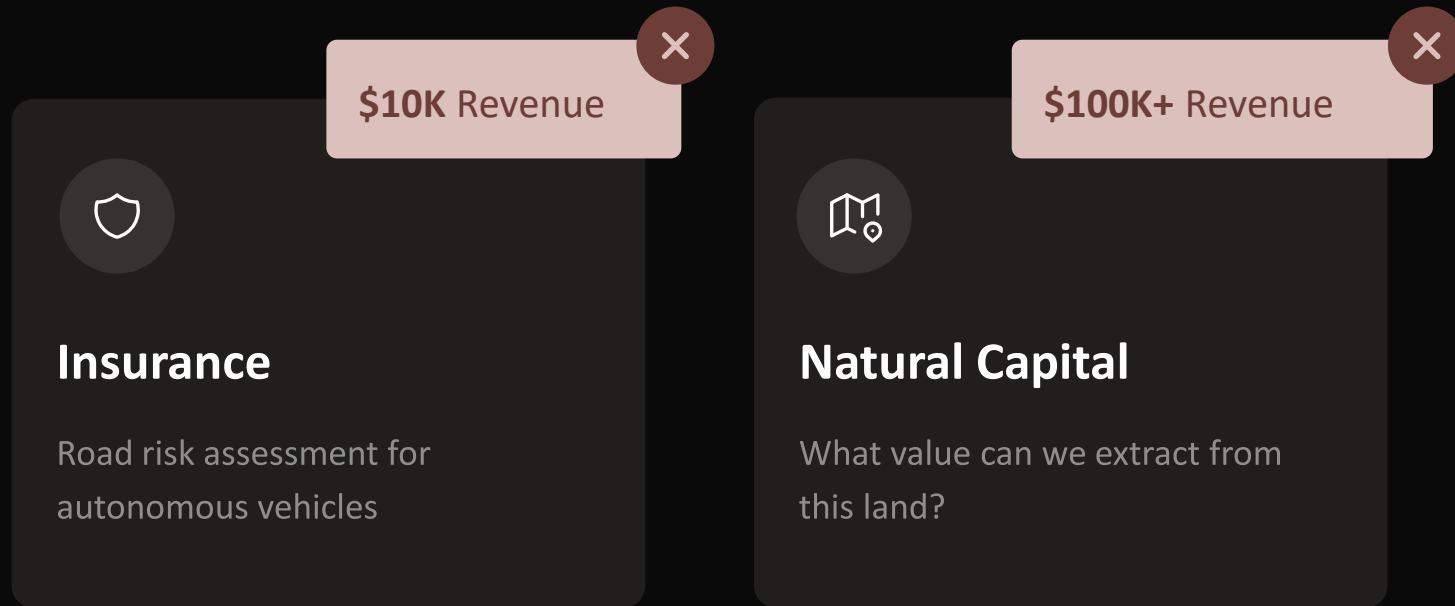
Combine with internal data

Run complex analysis

Collect the findings

Generate report





Progress is stalling at the ROI boundary



Mission-critical

Energy
\$3M/year for a load forecasting model

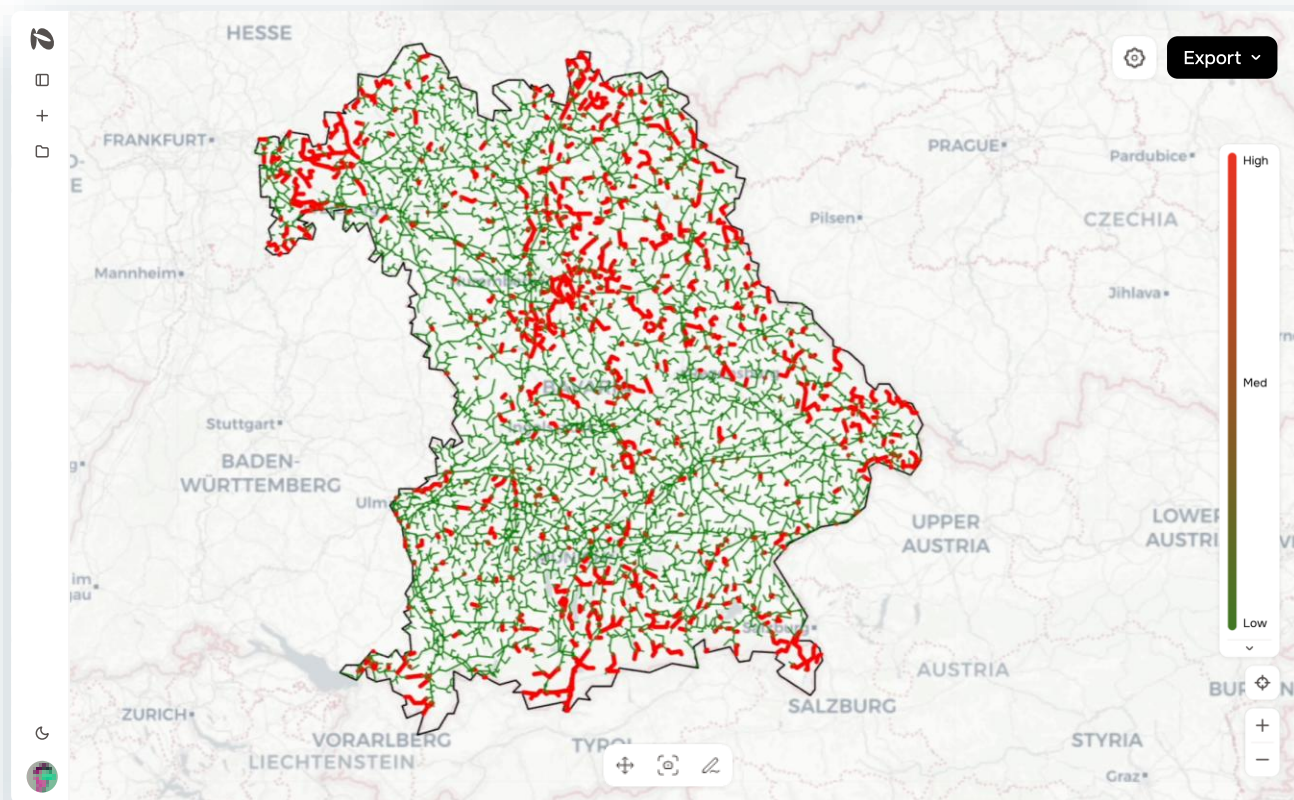
PangeAI is geospatial intelligence for anyone

-  **Natural-language queries**
-  **Automated analysis pipeline selection**
-  **Automated data collection**
Internal and externally sourced
-  **Detailed simulation generation**

Highlight power transmission line corridors in Bavaria where vegetation height exceeds safe clearance limits



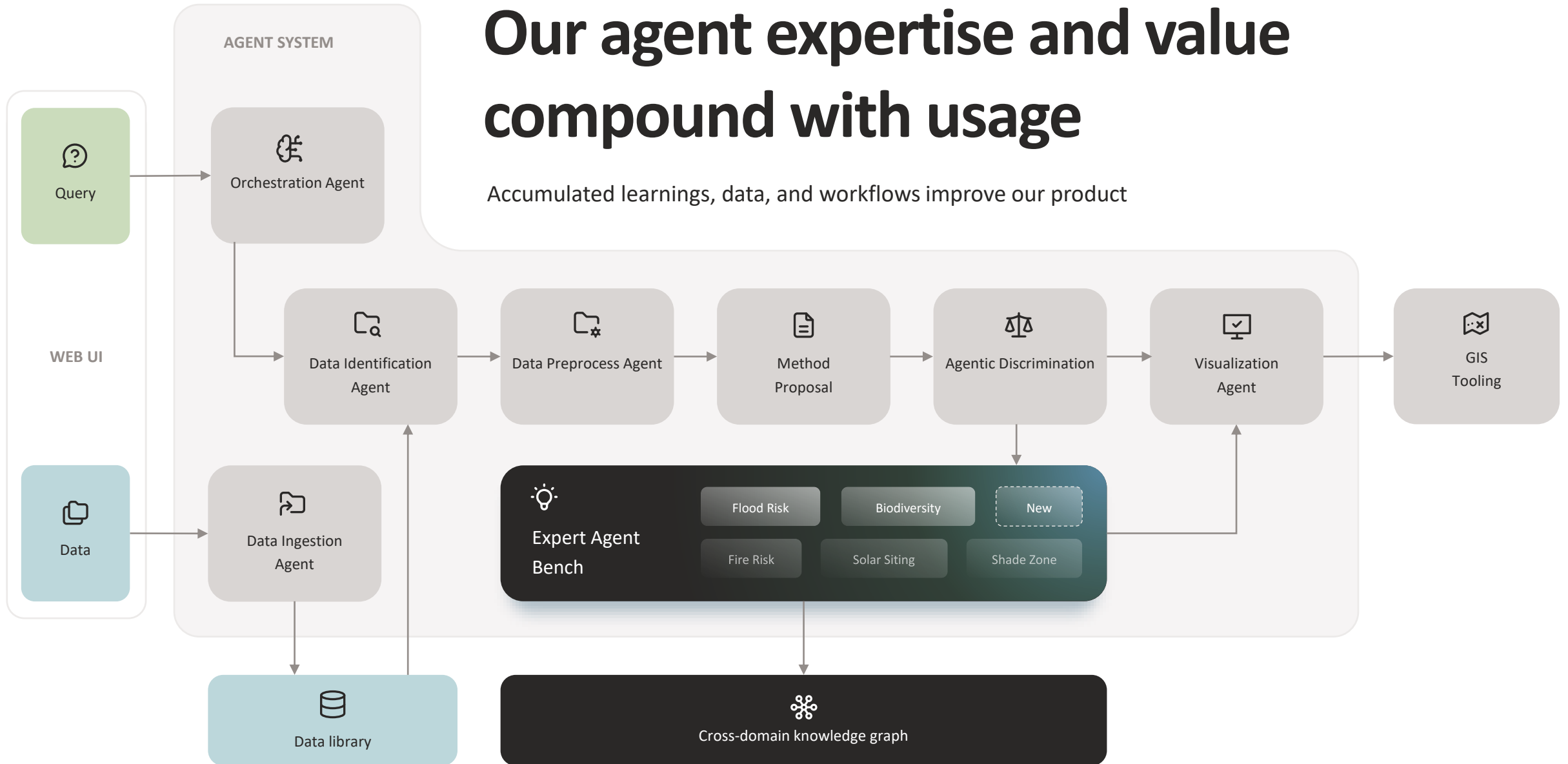
Here are the risky power lines:



Ask PangeAI...

Our agent expertise and value compound with usage

Accumulated learnings, data, and workflows improve our product



NO EXPERTS
REQUIRED

Our agents open up new ways to

interact with the earth



Today, we're focused on the verticals that struggle with spatial-driven data analysis

INITIAL VERTICALS



Energy

Immediate ROI through automated risk and siting analyses



Renewable site selection using environmental filters



Natural Capital

Urgent unmet need; current solutions are fragmented and manual



Land use change and degradation tracking over time



Insurance

Operational dependencies on land, infrastructure, and environmental conditions



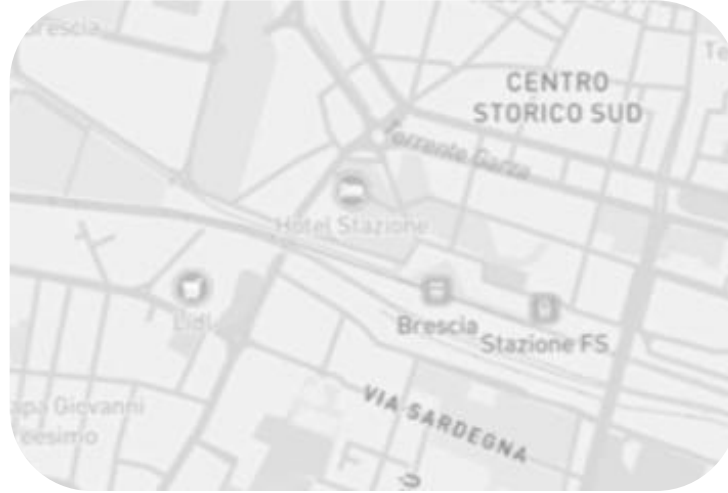
Flood, fire, and other risk exposure mapping for assets and portfolios

The Traction Highlight: PangeAI Agents Live



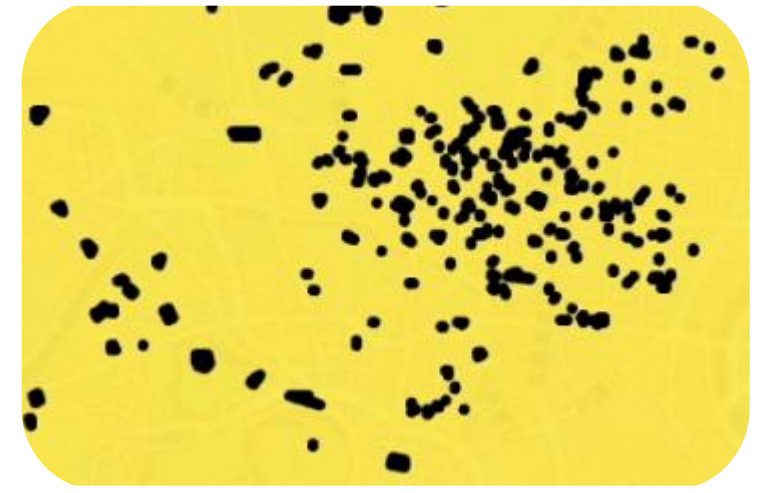
Japan: Highway Traffic Tracking

Live tracking of vehicles and motoring situation (accidents, slowdowns) on Japan's highways based on cable vibration and video observation data across the network



Europe: Energy Infrastructure

Energy Infrastructure anomaly detection for both electricity and gas pipeline grids, including predictive maintenance



Japan + Europe + USA: Insurance Risk Assessment

Large Insurance portfolio assessments both in Real Estate and auto insurance, including cutting edge Autonomous Vehicle Risk *

The Vision



The Vision Highlight: ESA Partnership

Marek Miltner - Stanford University / Forbes 30Under30 / PangeAI Inc
Researcher, CTO

esa **Phi-lab**

Φ Innovation Summit
23-25 June 2026
ESA-ESRIN | Frascati, Italy

- **Partnership directly with European Space Agency** working with the world's largest provider of Sattelite Imagery
- **Keynote speaking** at the biggest Earth Observation Summit worldwide, June 23-25 in Rome
- **Dedicated PangeAI Workshop** showcasing our agents hands-on at the main stage

The Vision Highlight: NVIDIA Partnership



- **Partnership directly with NVIDIA** through an exclusive Inception Program Agreement
- **Adapted custom NVIDIA DGX Spark** hardware for PangeAI's agents to run completely locally
- **Meaning:** no sharing of data outside of the PangeAI ecosystem
- **Globally first World Model** running completely locally – a needed prerequisite for Critical Infrastructure & Defense applications

A team steeped in geospatial experience



Johanna von der Leyen

CEO | BUSINESS

MA in Environmental Policy, Stanford

Stanford University



McKinsey & Company



6+ years

of experience with geospatial project painpoints



Marek Miltner

CTO | TECHNOLOGY

PhD in AI for Sustainable Energy, Stanford

Stanford University



BCG



8+ years

of experience in building AI-first products with successful exits

TOP TIER US & EU TALENT

Imperial College London

Stanford University



ADVISORS & ANGELS WITH EXPERIENCE FROM



Stanford University

THE NOBEL PRIZE